

Air Notch™ Pro

User Manual

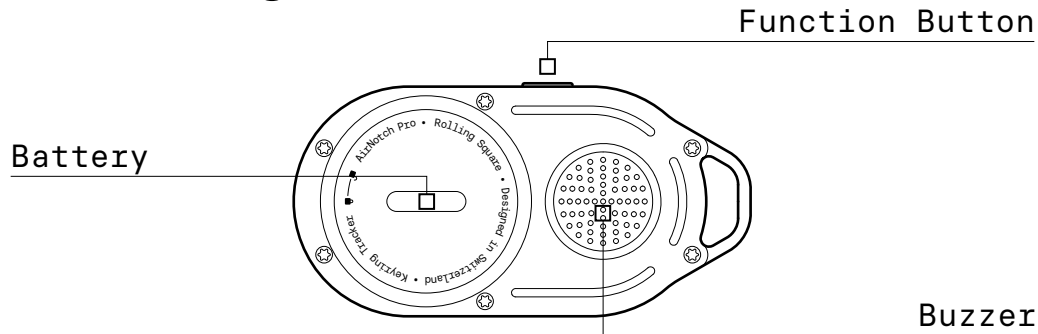
- 01** Getting Started
- 02** Basic Features
- 03** Handling
- 04** Privacy
- 05** The Fine Print
- 06** Safety and Notice
- 07** Specification



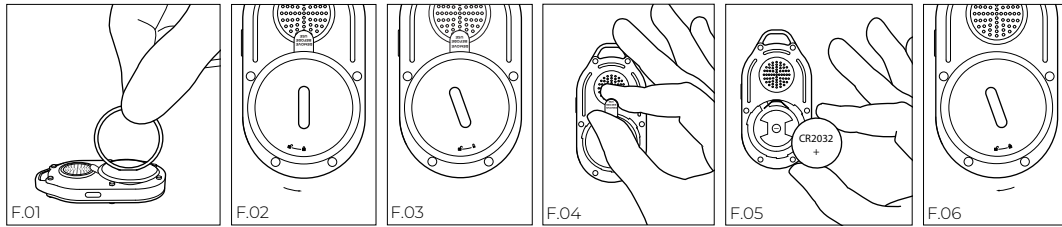
EU Declaration of conformity / Video tutorial:

<https://rsqr.ch/qr/ANP01S>

Getting Started 01



01.1 Battery set up:



This product includes two replaceable CR2032 batteries with a lifespan of 20 months. The batteries are pre-installed inside the product and protected by a paper sheet. To install them:

- Use the dedicated keyring to carefully open the battery cap by twisting it to the open-padlock icon. (F.01 - F.03)
- Remove the protective paper sheet after removing the two button batteries. (F.04)
- Reinsert the two new CR2032 batteries, place the batteries as indicated in the battery compartment (F.05)
- Close the product by aligning the closed padlock icon to the centre of AirNotch (F.06)

01.2 Power On:

- Turn on the device: Place your card on a hard surface, press and hold the button very hard until it beeps and turns on (approximately 5 seconds). Please note that the button is designed to be firm to prevent accidental pressing in your wallet. (To confirm whether the device has been turned on, double-click the device button; it will produce a sound, indicating that the device is on).

01.3 Power Off:

- Turn off the device: press and hold the button 5 times consecutively until it makes a sound, and the LED blinks 5 times.

01.4 Add Your AirNotch Pro to "Apple Find My" App:

- Open Find My™ app on your supported iPhone or iPad and allow notifications from the app.
- Tap+, then "Add Other Item".
- Once your AirNotch Pro is located, tap "Agree".
- Choose a recognizable name and emoji for your AirNotch Pro and tap "Continue".
- Find My™ will ask for confirmation to add your Item Locator to your Apple ID tap "Continue".
- Tap "Finish" and your AirNotch Pro will be set up and ready to be connected to whatever item you wish to locate, e.g., your keys, backpack.

Basic Features

02

AirNotch Pro in the works exclusively with Apple Find My Network through the Find My app on your iPhone, iPad, iPod touch or Mac device. The Find My app can help you locate a missing item by making AirNotch Pro play a sound when nearby, looking for its bright details when in a dark Environment and by displaying its last known location on a map. Find a lost item by marking AirNotch Pro as lost in the Find My app and get a notification when Apple Find My app locates it.

03

Handling

03.1 Requirements:

To use the Find My app to locate this item, the latest version of iOS, iPadOS, watchOS or macOS is recommended.

03.2 "Mark as Lost":

When the device is turned on, click four times the device button (the device will sound), then press and hold the device button within three seconds. After 2 Seconds you will hear a sound continue to press and hold the button for eight seconds, until you hear another sound. Then, release the button. The Item Locator is now reset and ready to be paired to a new device.

03.3 Factory Reset Your Item Locator:

When the device is turned on, click four times the device button (the device will sound), then press and hold the device button within three seconds. After 2 seconds you will hear a sound continue to press and hold the button for eight seconds, until you hear another sound. Then, release the button. The Item Locator is now reset and ready to be paired to a new device.

Privacy

04

Apple's Find My network uses end-to-end encryption to prevent third parties from accessing data while it is being transferred. This ensures that neither Rolling Square nor Apple can access the location data reported by the Find My Network.

05

The Fine Print

This device complies with part 15 of the FCC Rules. Operation is subject to the following two conditions: (1) This device may not cause harmful interference, and (2) this device must accept any interference received, including interference that may cause undesired operation. NOTE: The manufacturer is not responsible for any radio or TV interference caused by unauthorized modifications or changes to this equipment. Such modifications or changes not expressly approved by the party responsible for compliance could void the user's authority to operate this device. The device has been evaluated to meet general RF exposure requirement, The device can be used in portable exposure condition without restriction. Federal Communication Commission (FCC) Radiation Exposure Statement Power is so low that no RF exposure calculation is needed.

This equipment has been tested and found to comply with the limits for a Class B digital device, pursuant to part 15 of the FCC Rules. These limits are designed to provide reasonable protection against harmful interference in a residential installation. This equipment generates uses and can radiate radiofrequency energy and, if not installed and used in accordance with the instructions, may cause harmful interference to radio communications. However, there is no guarantee that interference will not occur in a particular installation. If this equipment does cause harmful interference to radio or television reception, which can be determined by turning the equipment off and on, the user is encouraged to try to correct the interference by one or more of the following measures: Reorient or relocate the receiving antenna. Increase the separation between the equipment and receiver. Connect the equipment into an outlet on a circuit different from that to which the receiver is connected.

Use of the Works with Apple badge means that a product has been designed to work specifically with the technology identified in the badge and has been certified by the product manufacturer to meet Apple Find My network product specifications and requirements. Apple is not responsible for the operation of this device or use of this product or it's compliance with safety and regulatory standards. Apple Find My, Apple Watch, Find My, iPhone, iPad, iPadOS, iPod touch, Mac, macOS and watchOS are trademarks of Apple Inc. IOS is a trademark of Cisco and is used under license.

Safety and Notice

06

Safety

The recommended temperature range for devices and accessories is 0°C to 50°C (32°F-122°F). Unless specifically indicated that it is safe to do so in the user guide or instruction manual, do not use this device in an environment that exceeds the recommended low or high temperature. Unless specifically indicated that it is safe to do so in the user guide or instruction manual, avoid exposing your device to direct sunshine or excessively wet environments.




THERE IS A RISK OF EXPLOSION IF AN INCORRECT BATTERY TYPE IS USED. DISPOSE OF USED BATTERIES ACCORDING TO THEIR INSTRUCTIONS.

Warning

- Replacing a battery with an incorrect type may bypass safeguards and create danger;
- Disposal of a battery in a fire or other source of significant heat, or by crushing, or cutting, may result in an explosion as well as leakage of flammable liquids and gases;
- Leaving a battery in an extremely hot environment may result in an explosion as well as leakage of flammable liquids and gases;
- A battery subjected to extremely low air pressure may result in an explosion as well as leakage of flammable liquids and gases.

Notice

 This product complies with the radio interference requirements of the European Community.

Declaration of Conformity

Hereby, Rolling Square declares that the radio equipment type AirCard Bluetooth item finder is in compliance with Directive 2014/53/EU. at the following internet address: <https://rsqr.ch/qr/ANP01S>



Your product is designed and manufactured with high quality materials and components, which can be recycled and reused. Your product is designed and manufactured with high quality materials and components, which can be recycled and reused. This symbol means the product must not be discarded as household waste, and should be delivered to an appropriate collection facility for recycling. Proper disposal and recycling helps protect natural resources, human health and the environment. For more information on disposal and recycling of this product, contact your local municipality, disposal service, or the shop where you bought this product.

FCC Statement

This device complies with Part 15 of the FCC Rules. Operation is subject to the following two conditions; (1) this device may not cause harmful interference, and (2) this device must accept any interference received, including interference that may cause undesired operation.

Warning: Changes or modifications not expressly approved by the party responsible for compliance could void the user's authority to operate the equipment.

Note: This equipment has been tested and found to comply with the limits for a Class B digital device, pursuant to Part 15 of the FCC Rules. These limits are designed to provide reasonable protection against harmful interference in a residential installation.

This equipment generates uses and can radiate radio frequency energy and, if not installed and used in accordance with the instructions, may cause harmful interference to radio communications. However, there is no guarantee that interference will not occur in a particular installation. If this equipment does cause harmful interference to radio or television reception, which can be determined by turning the equipment off and on, the user is encouraged to try to correct the interference by one or more of the following measures: (1) Reorient or relocate the receiving antenna. (2) Increase the separation between the equipment and receiver. (3) Connect the equipment into an outlet on a circuit different from that to which the receiver is connected. (4) Consult the dealer or an experienced radio/TV technician for help.

FCC Radio Frequency Exposure Statement. The device has been evaluated to meet general RF exposure requirements. The device can be used in portable exposure condition without restriction.

Notice: Shielded cables

All connections to other computing devices must be made using shielded cables

to maintain compliance with FCC regulations.
RF exposure information:

The device has been evaluated to meet general RF exposure requirements. The device came used in portable exposure condition without restriction. The min separation distance is

Frequency bands and power as below:

Bluetooth Operation Frequency: 2402-2480MHz; Bluetooth Max.

Power: 2.85 dBm

The following importer is the responsible party:

Rolling Square SA | Corso San Gottardo 99, Chiasso CH6830, Switzerland.

07

Specifications

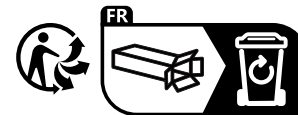
Range: up to 60 m (200 ft) [60 m] - line of sight

Temperature range: -15 °C to +50 °C (5 °F [-15°C] to 122 °F [50°C])

Modulation method: GFSK

Antenna power: < 1 mW

Operating frequency band: 2402-2480 MHz



Points de collecte sur www.quefairedemesdechets.fr
Privilégiez la réparation ou le don de votre appareil !



www.rollingsquare.com